

ffA Spectral Whitening

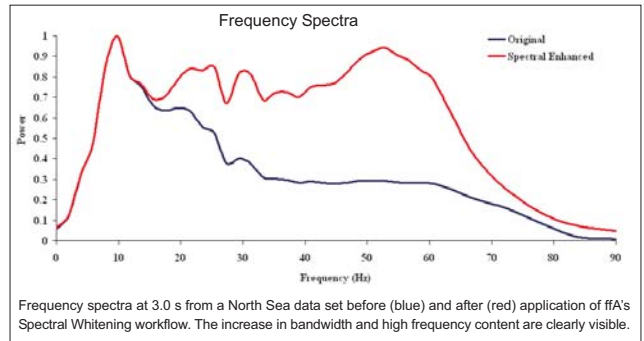


Enhancing seismic image quality for a more accurate interpretation

ffA's Spectral Whitening workflow combines ffA's volumetric frequency analysis techniques with 3D adaptive noise cancellation filtering to enhance the spectral content of seismic data whilst simultaneously increasing the signal to noise ratio. The workflow can be applied to post-stack data and allows for full user control over the degree of spectral enhancement to deliver optimal seismic image quality.

ffA's Spectral Whitening workflow improves event continuity and produces a more detailed seismic image for:

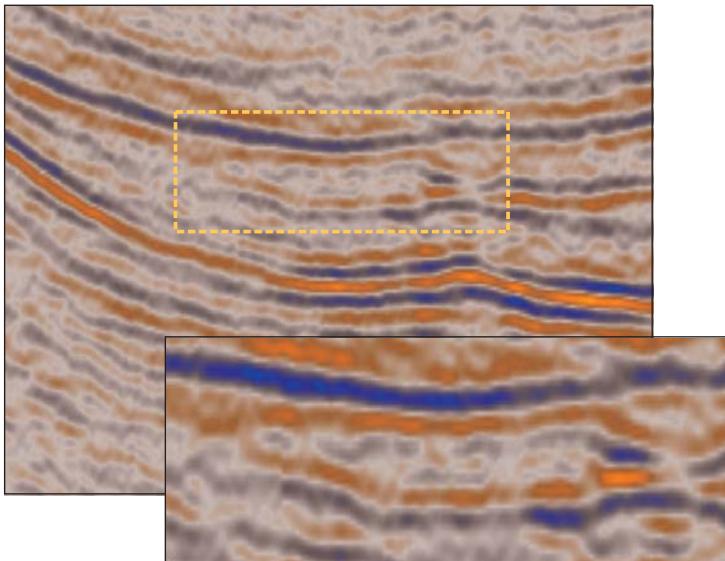
- Enhanced imaging of large and small scale faults
- Improved attribute extraction and analysis
- More accurate event thickness estimation



Enhanced Stratigraphic Imaging

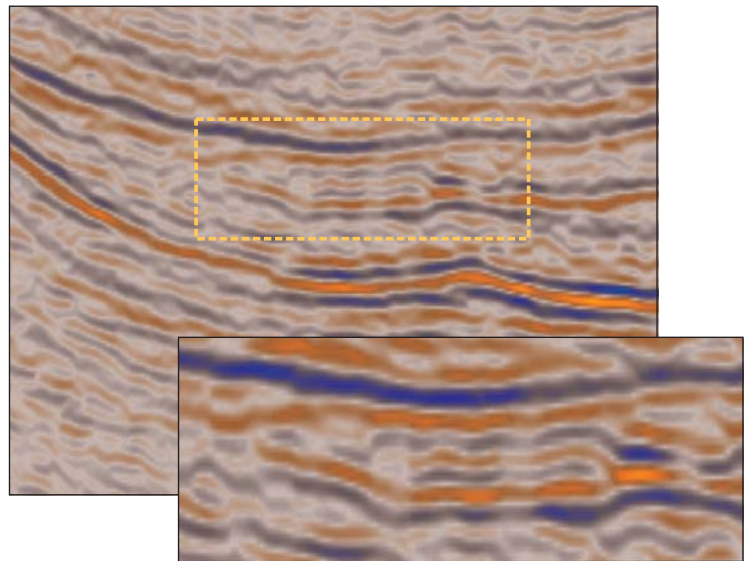
Original data

The combination of noise and lack of vertical resolution in the original data hampers detailed stratigraphic interpretation.



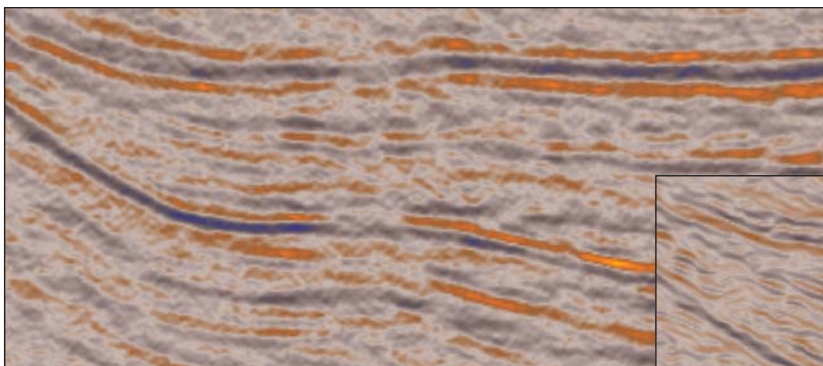
ffA Spectral Whitening

Following spectral whitening and noise filtering thinly bedded systems are more clearly imaged allowing a more accurate stratigraphic interpretation.

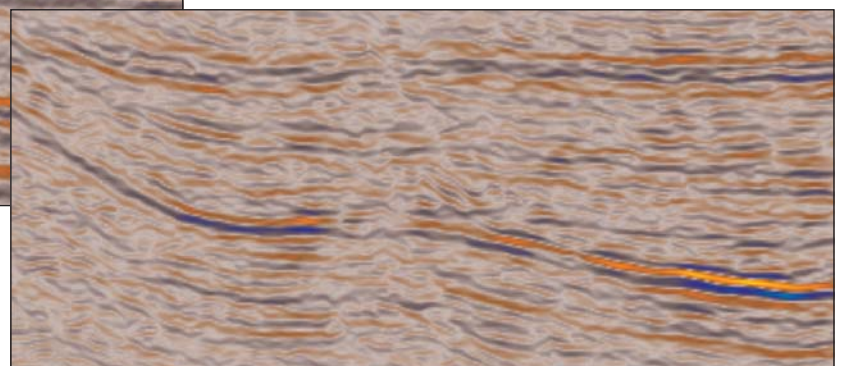


Enhanced Structural Imaging

Original data: Noise and limited vertical resolution impact the clarity with which small scaling faults and fractures are imaged



ffA Spectral Whitening: the improved vertical resolution provided by ffA's Spectral Whitening workflow enables better definition of structure allowing a more accurate interpretation



Data courtesy of Venture Production_{UK}